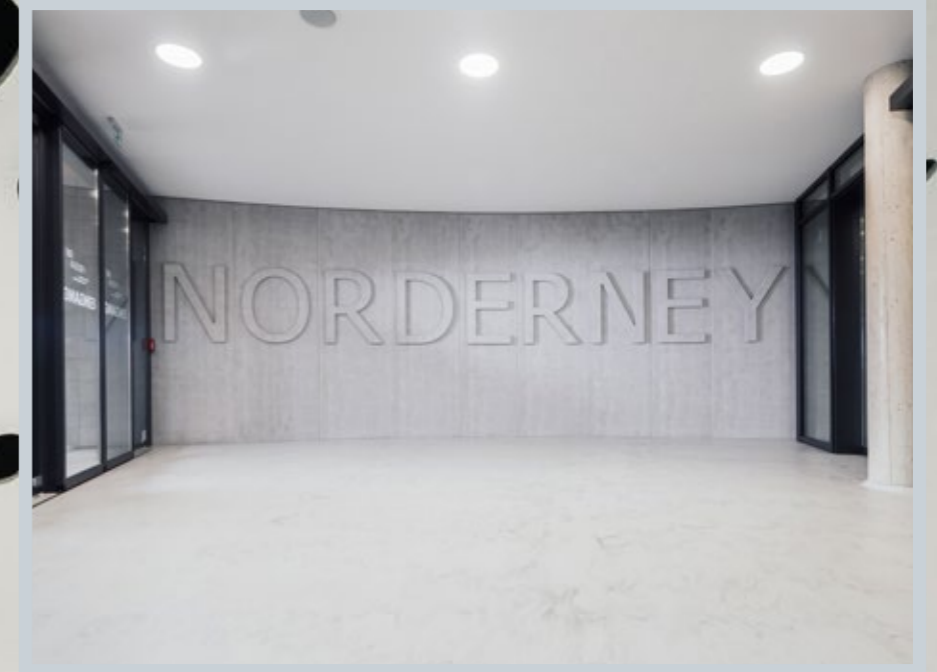


Lust  
auf  
*imi?*

**imi**  
SURFACE DESIGN







imi-beton vintage

Hafenterminal der Reederei Frisia auf Norderney









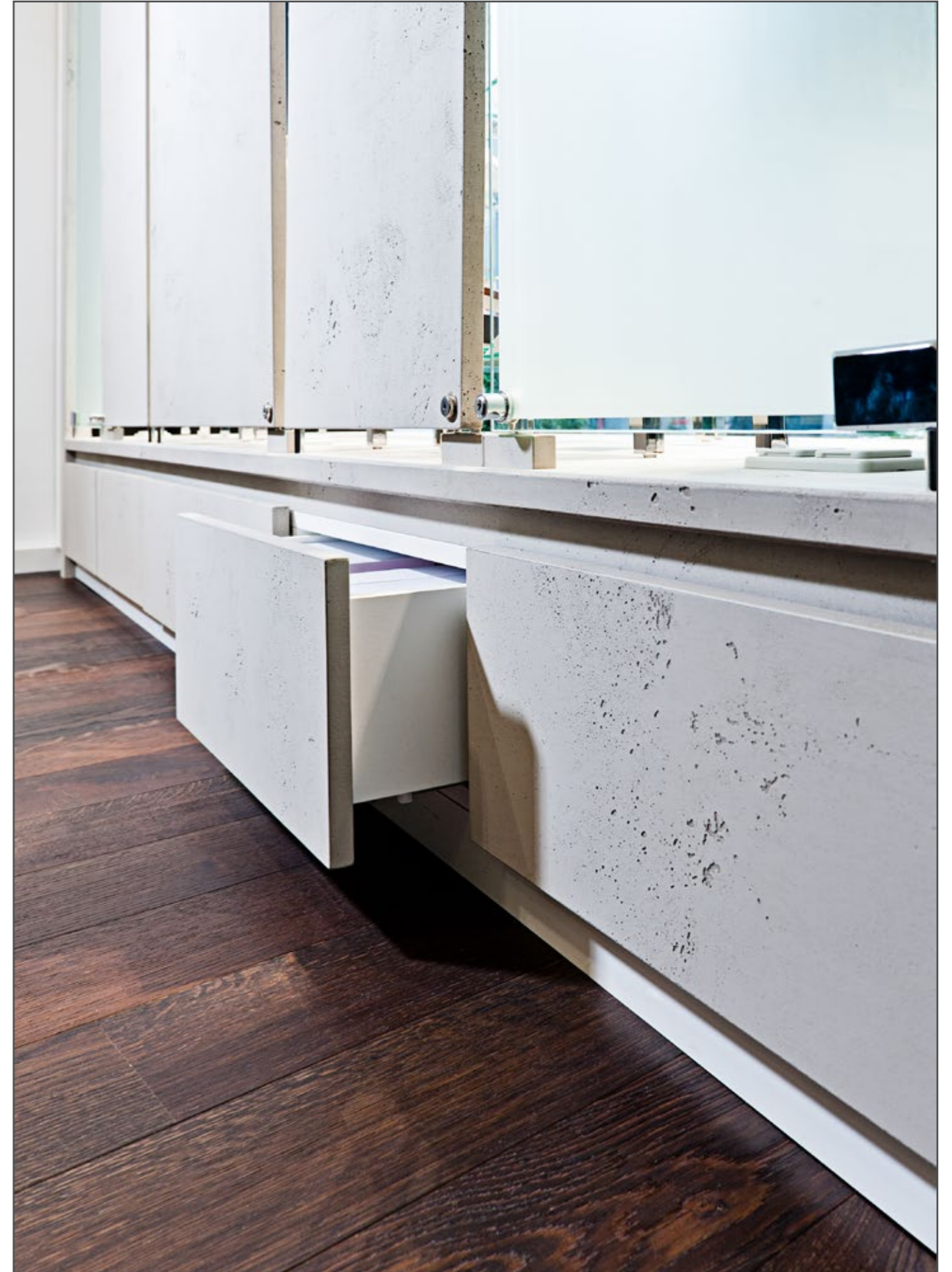


















FALKE  
ERGONOMIC  
SPORT SYSTEM

FALKE  
ERGONOMIC  
SPORT SYSTEM

ACHILLES

STABILIZING

IMPULSE

IMPULSE AIR

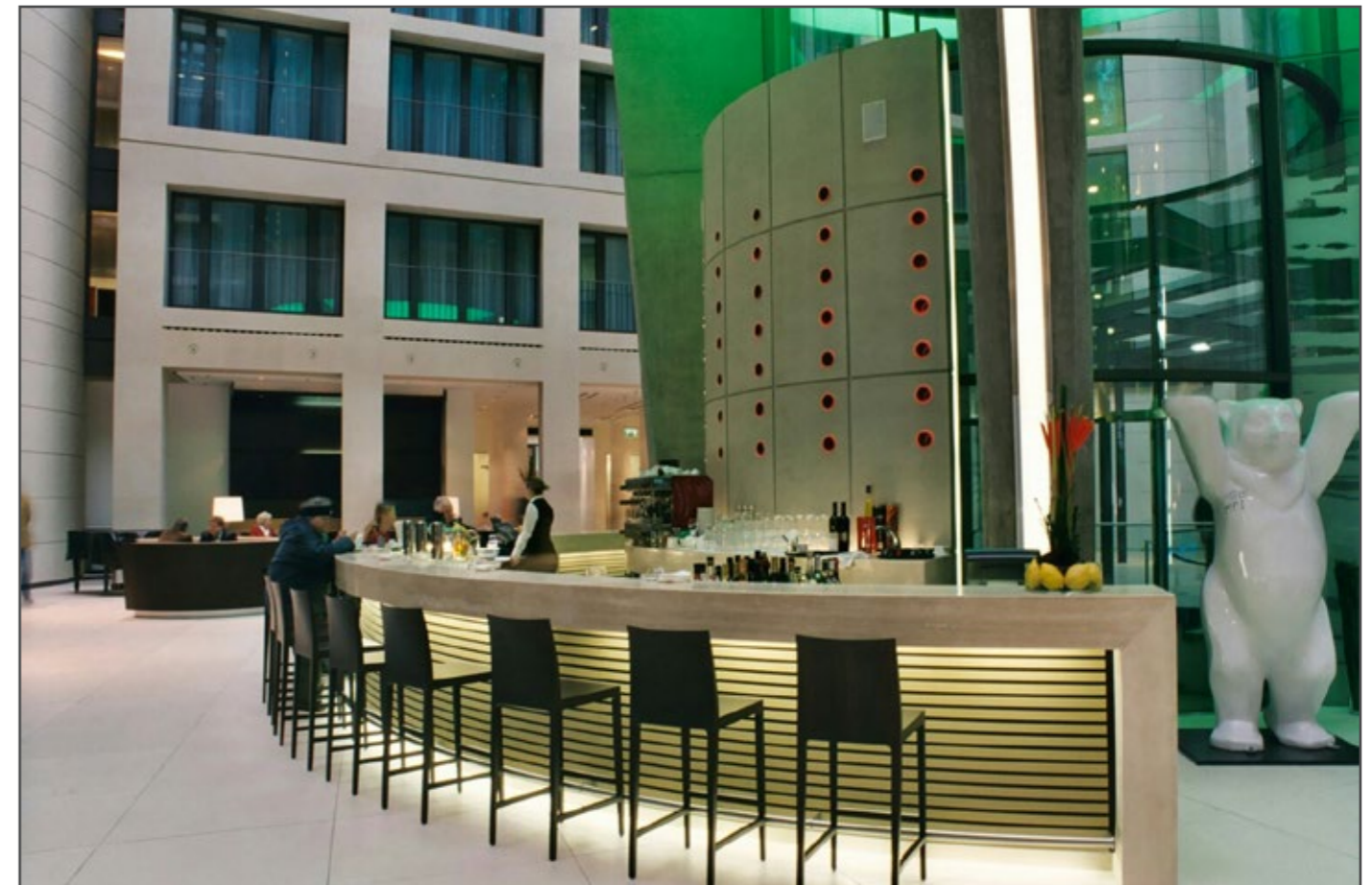
4 GRIP

IMPULSE  
RUN

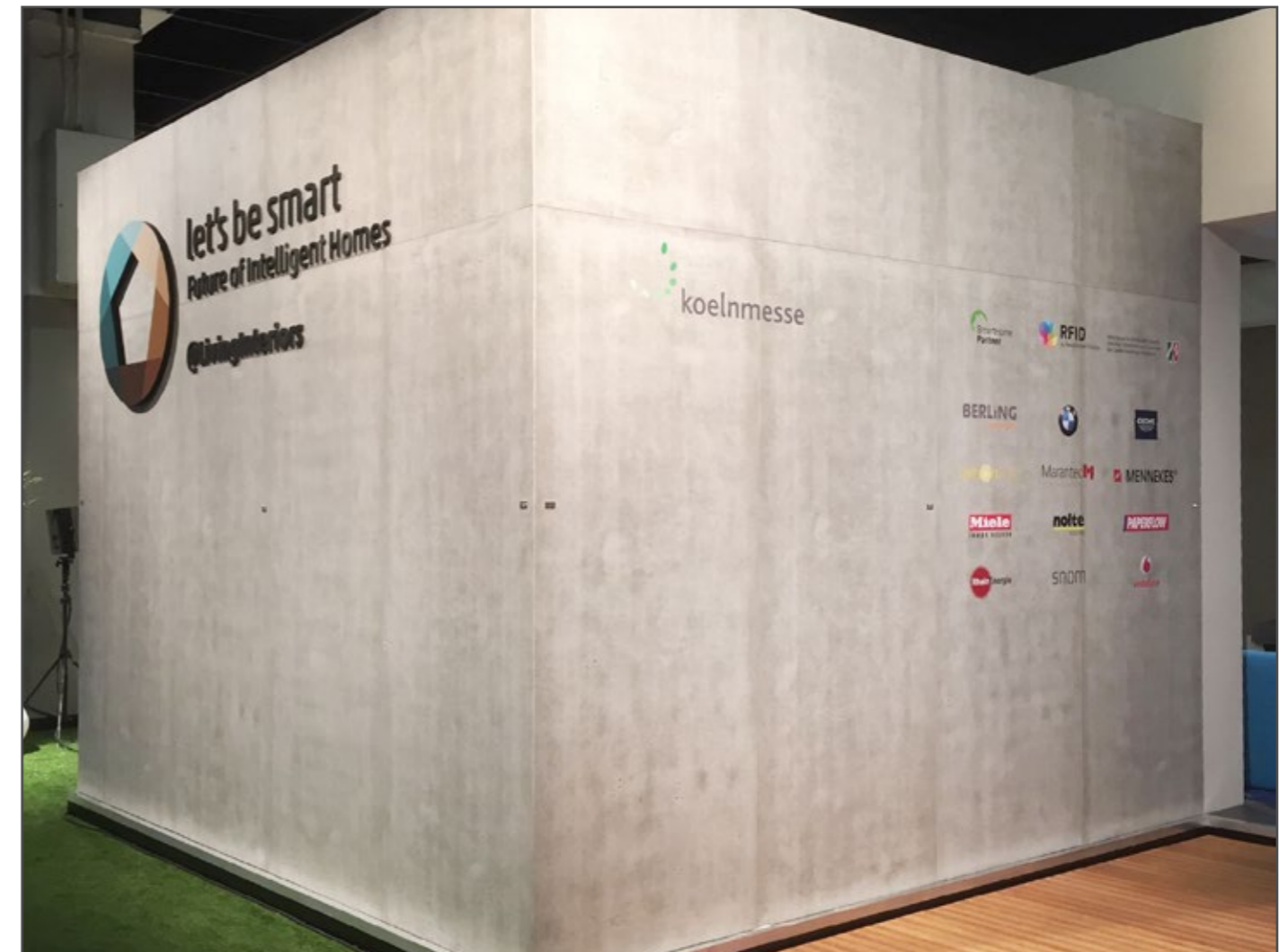














imi-beton vintage







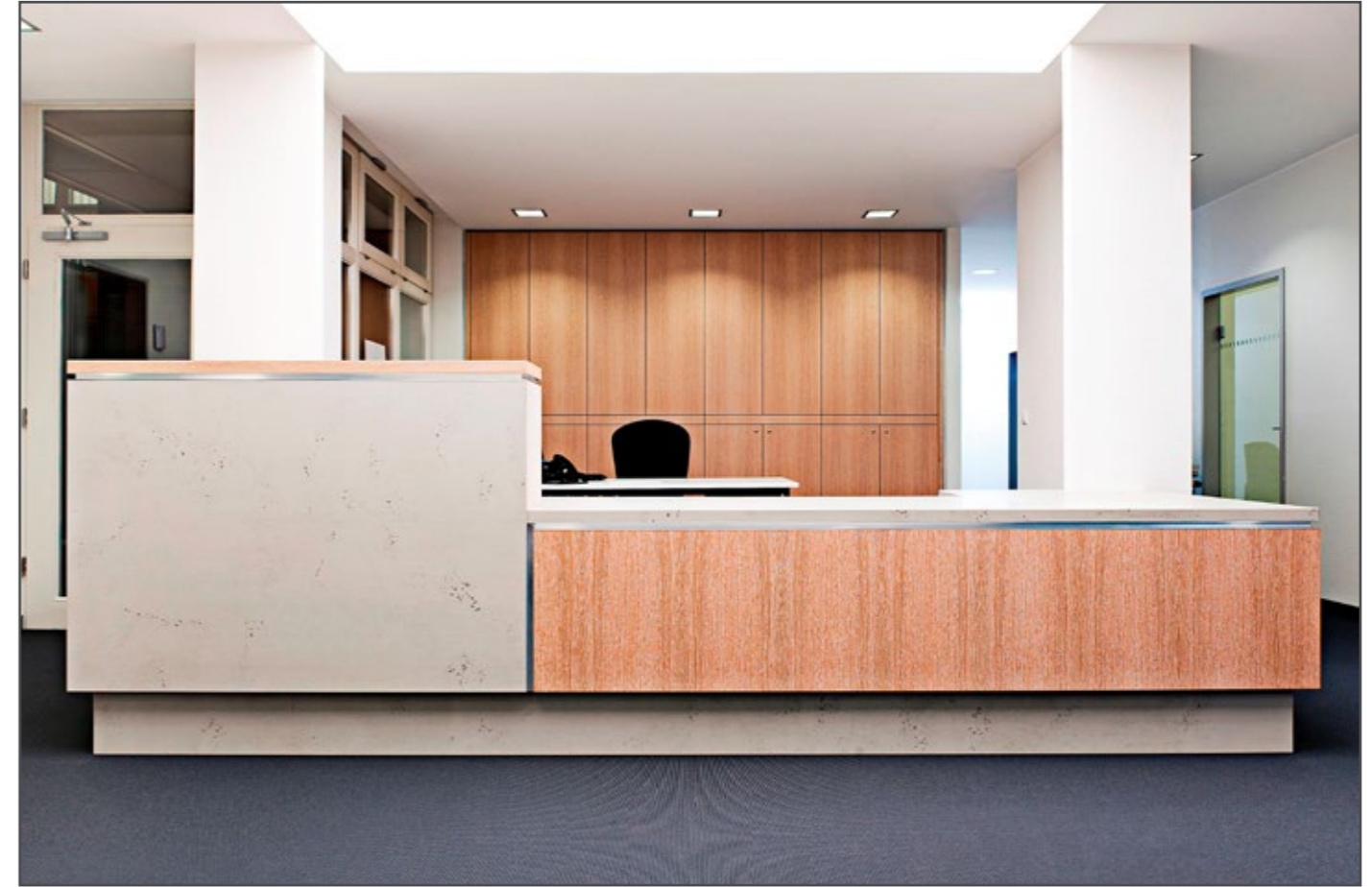




Architektur: trojanworks, Foto: Carsten Trojan



































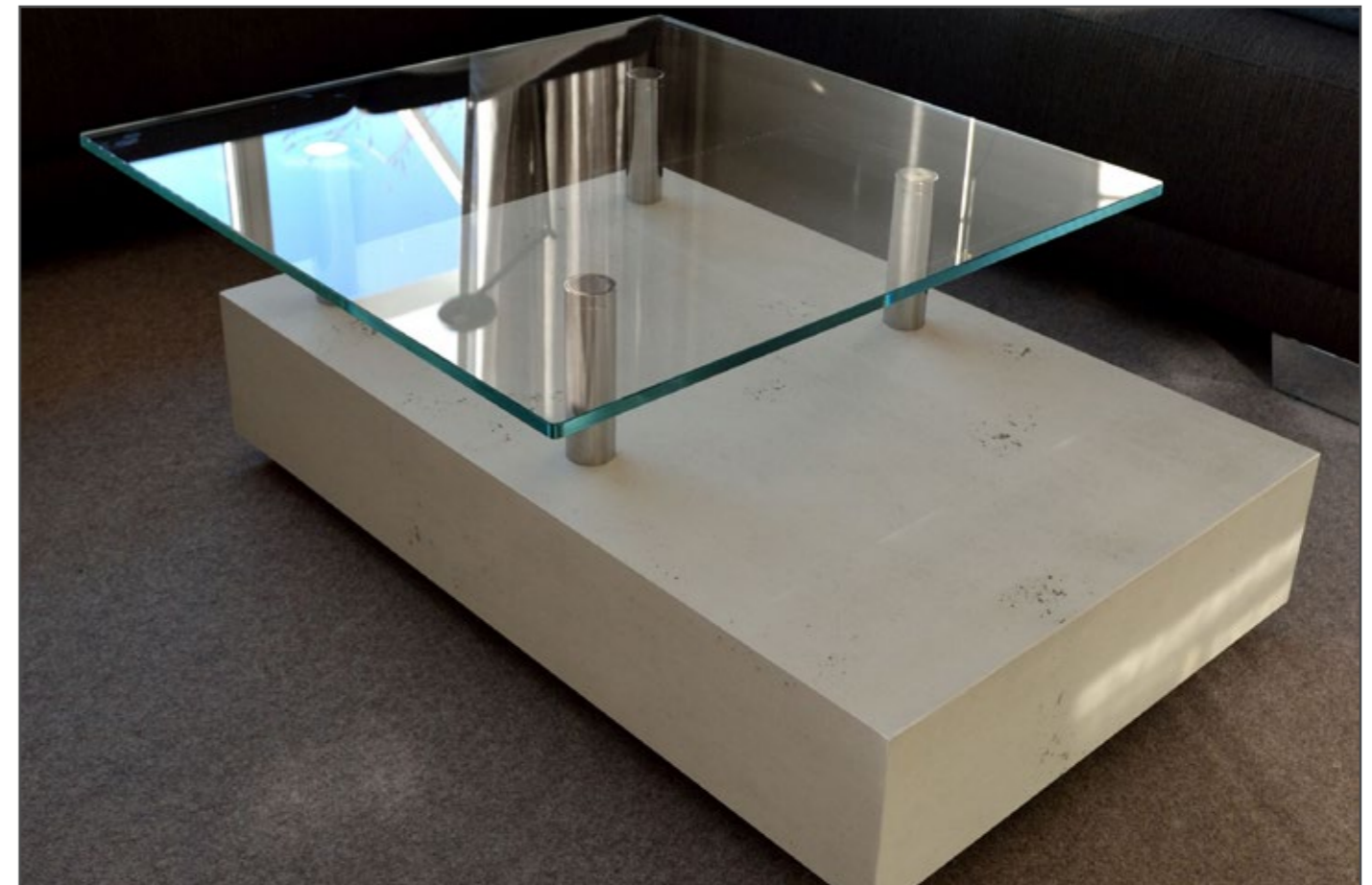












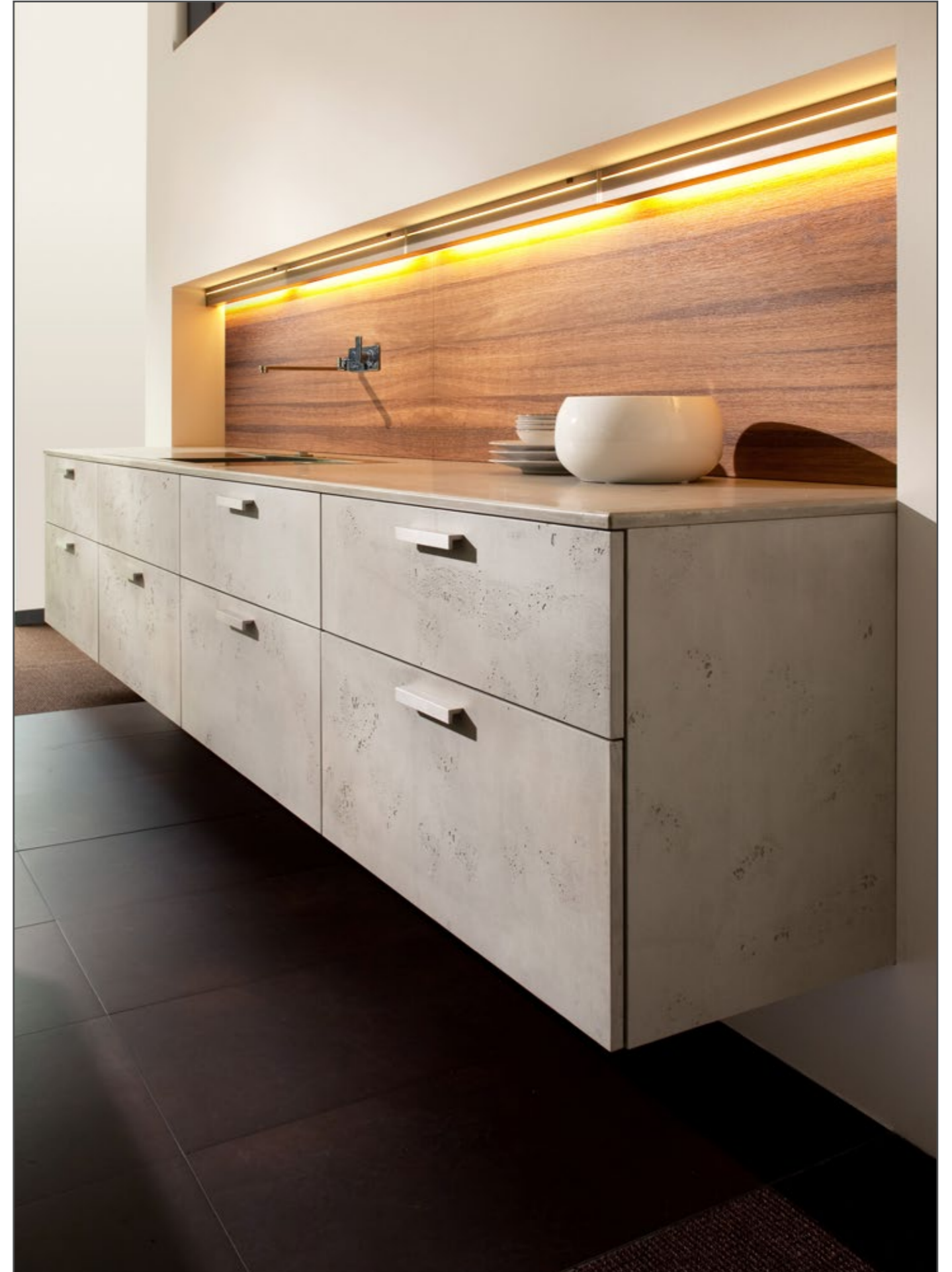








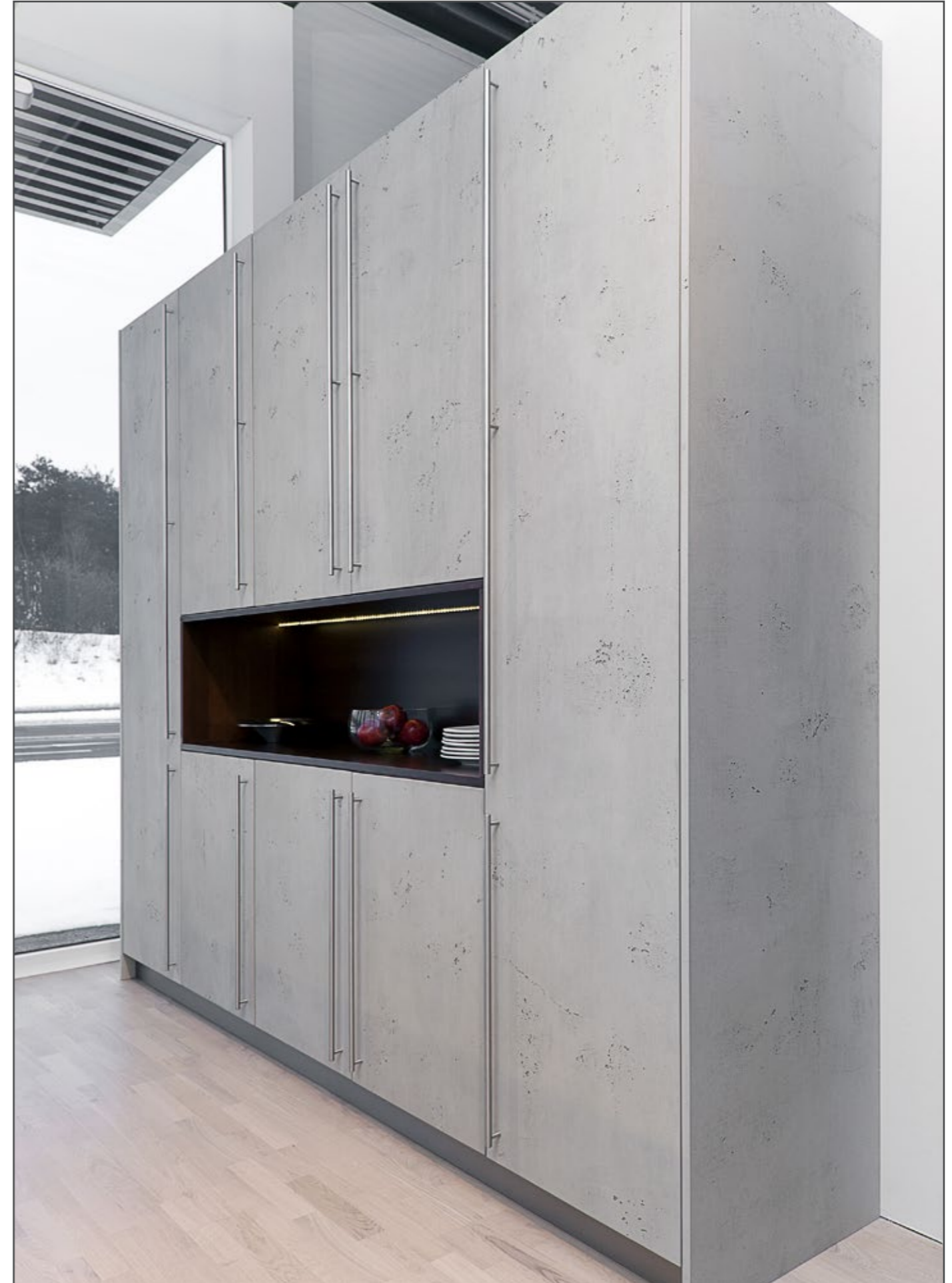








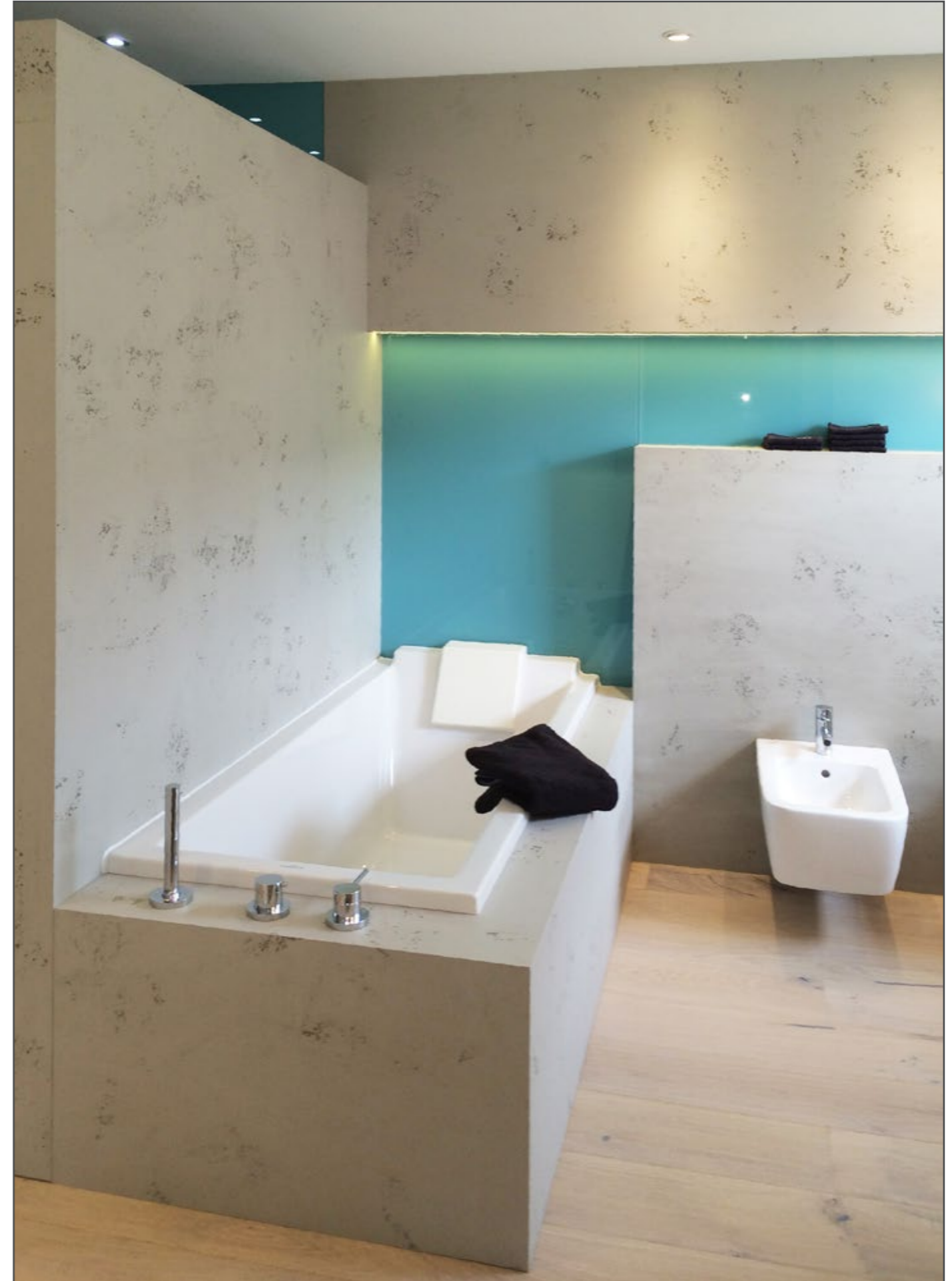
































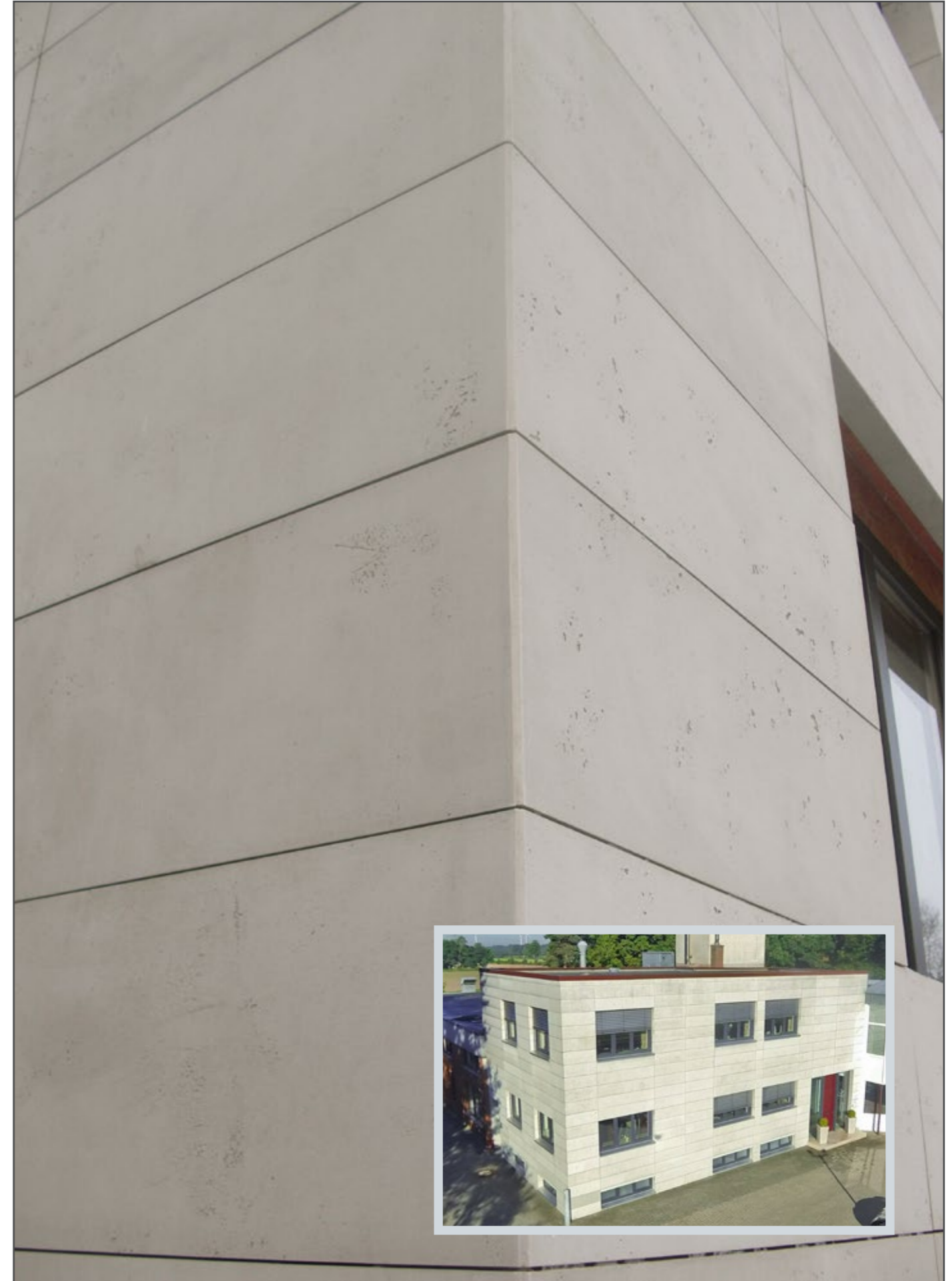








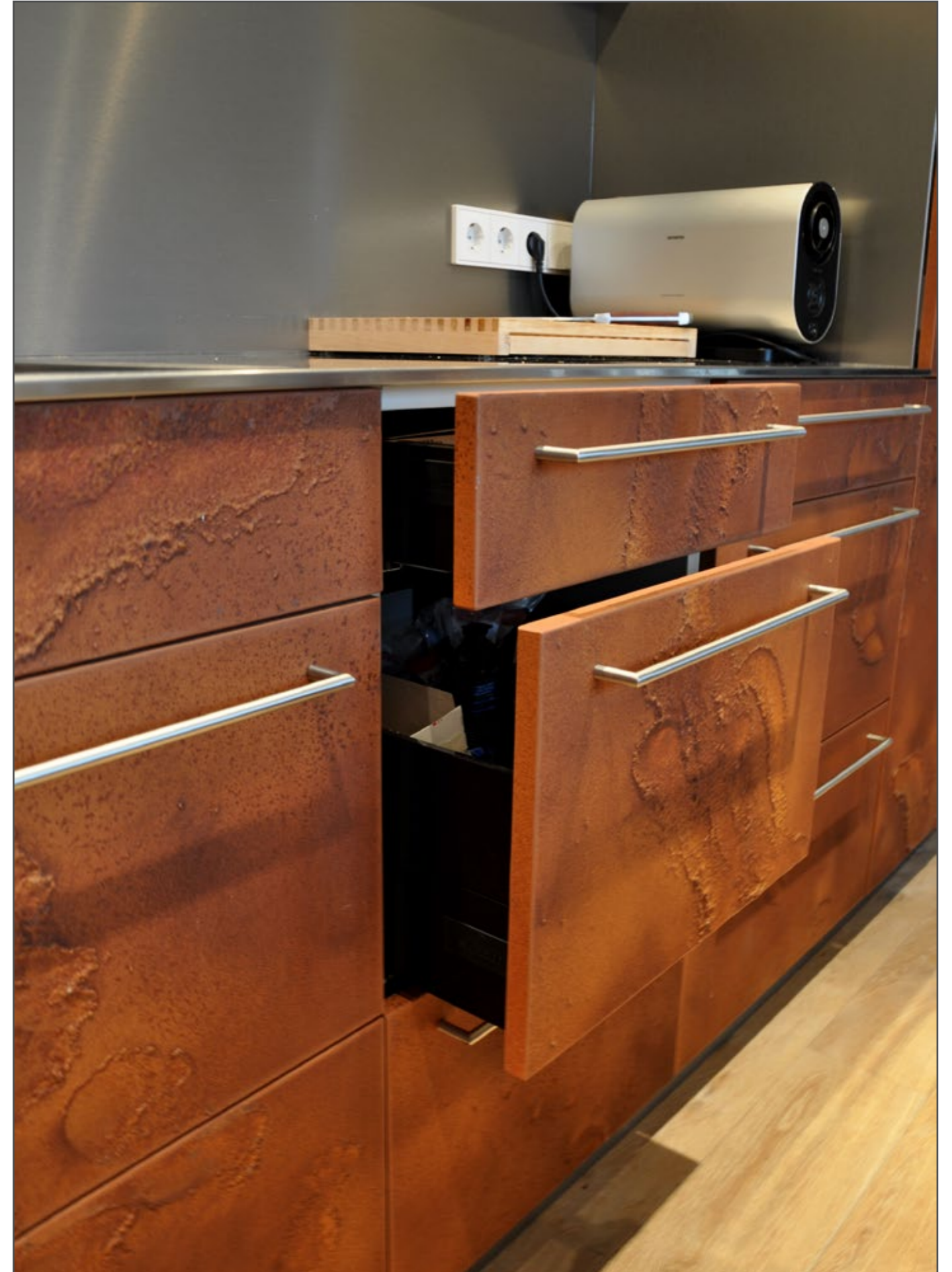
Diese Abbildung zeigt eine Computer-Visualisierung



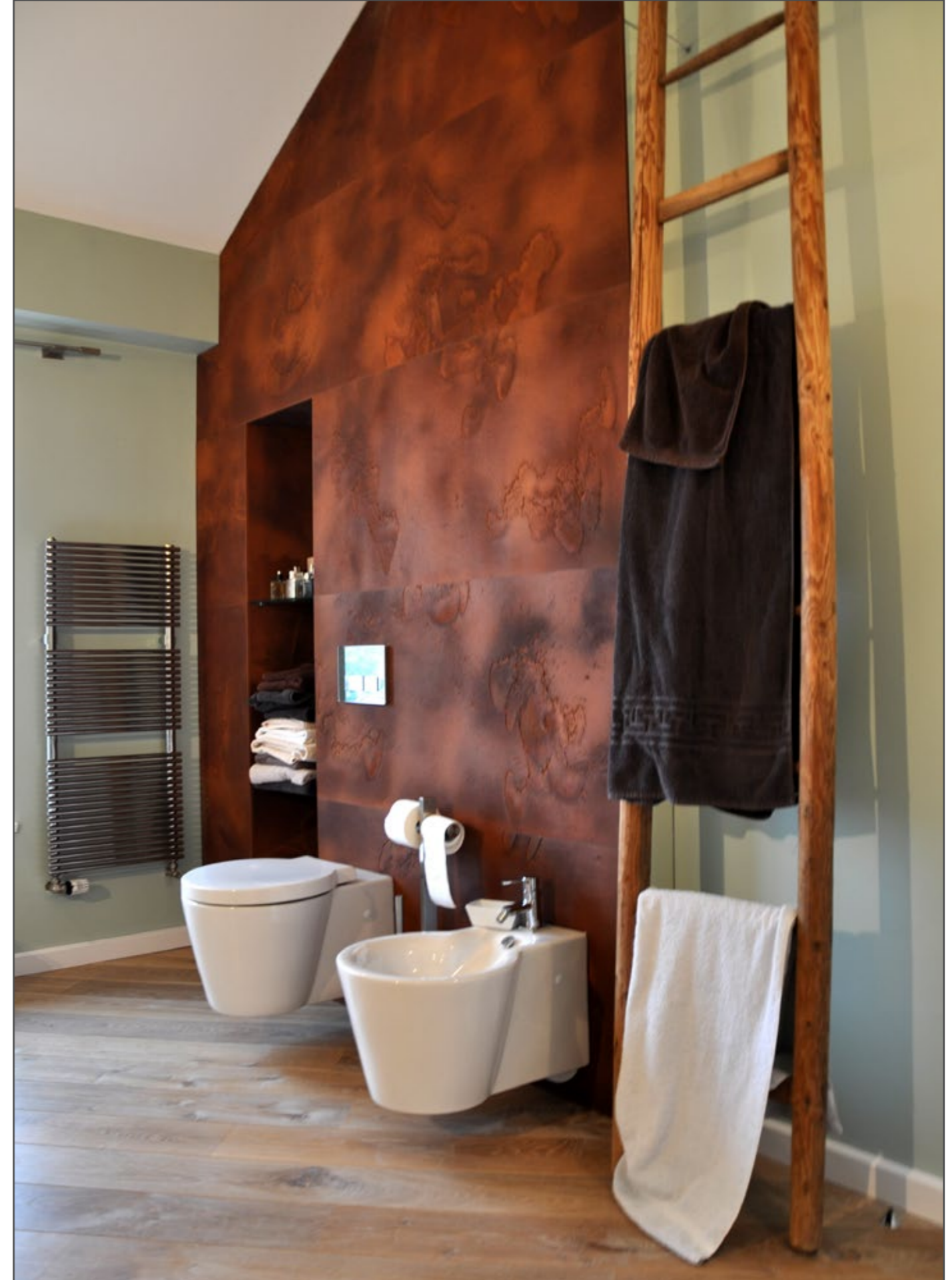














imi-rost tief | Badeinrichtung





















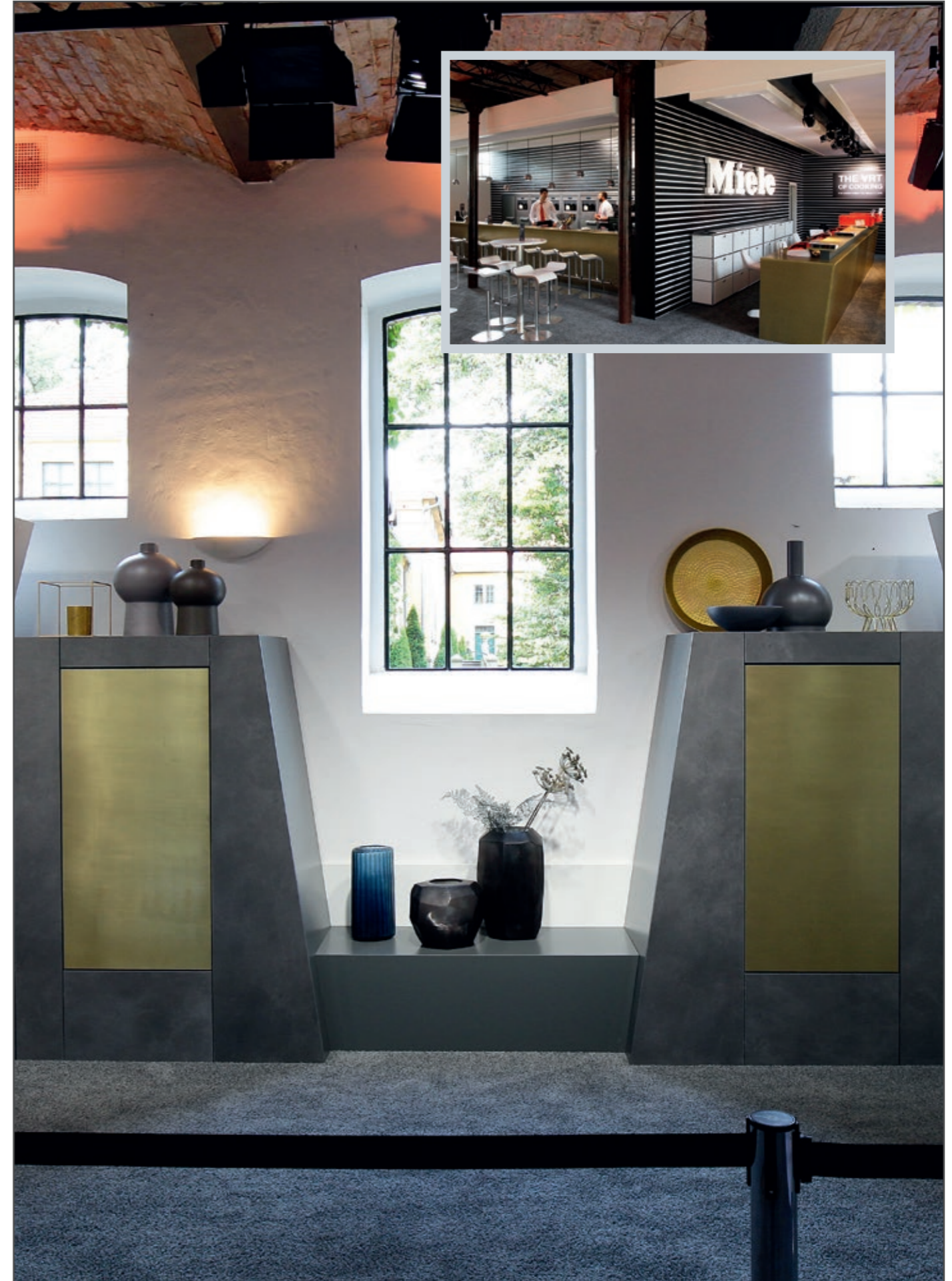






Bilder: ©Dittel Architekten GmbH







imi-altholz sonnig rustikal – private Jagdhütte





imi-altholz dunkel-gehackt – Marstallcenter Ludwigsburg



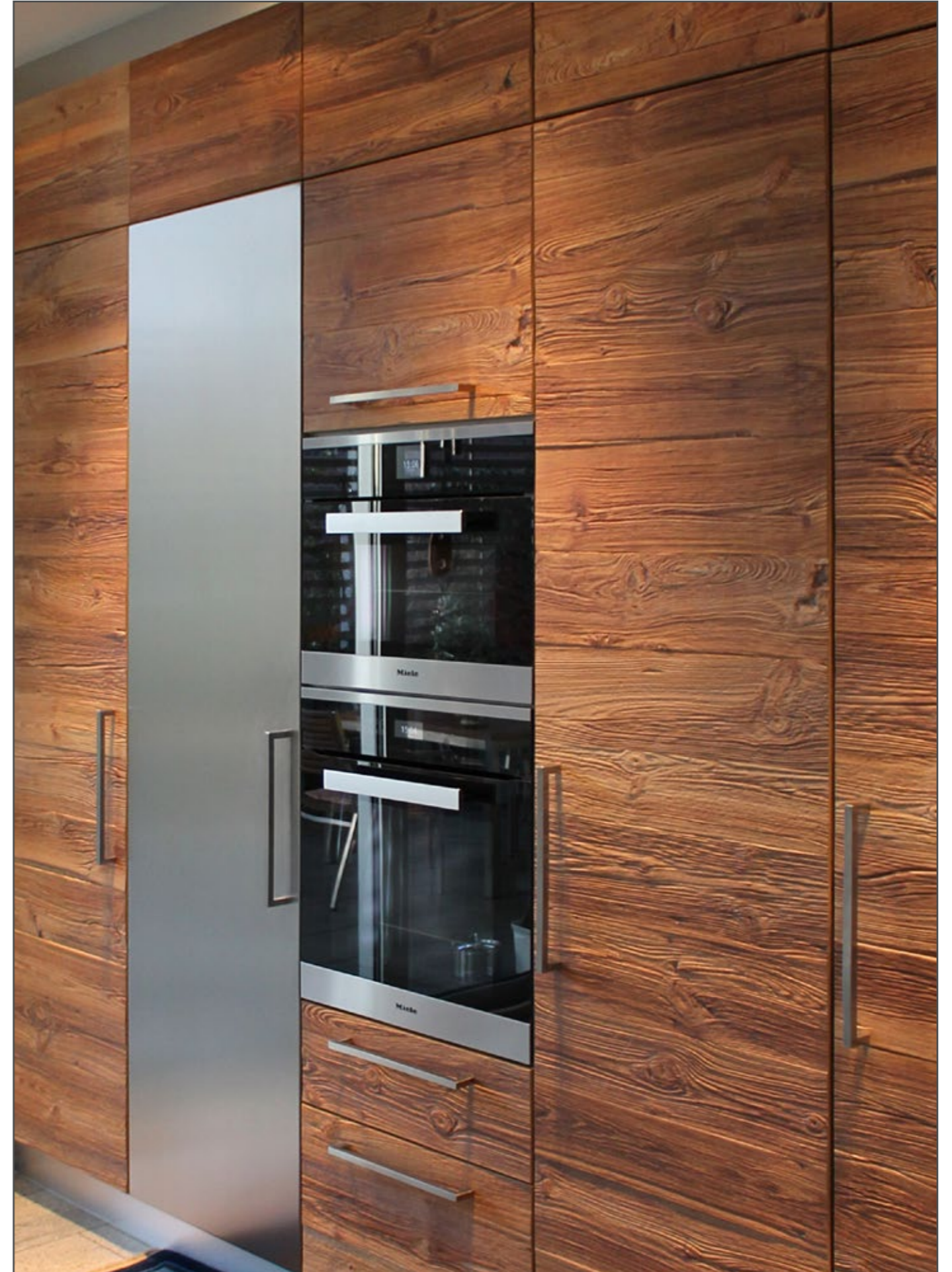
Detailaufnahmen

Fotos: DDS, Konradin Medien GmbH, Georg Molinski



















imi-monyt Steinpaneel











Swissbau Design Award 2014,  
Bronze in der Kategorie Standbauten über 80 m2.

Walter Meier Klima Schweiz AG  
Fotograf Stefan Schmidlin







www.**imi**-beton.com

**imi** ist eine Marke der

H. Schubert GmbH

Bilk 73

48493 Wettringen

Tel.: +49 (0) 25 57 - 93 77 40

Fax: +49 (0) 25 57 - 93 77 49

[info@imi-beton.com](mailto:info@imi-beton.com)

[www.imi-beton.com](http://www.imi-beton.com)